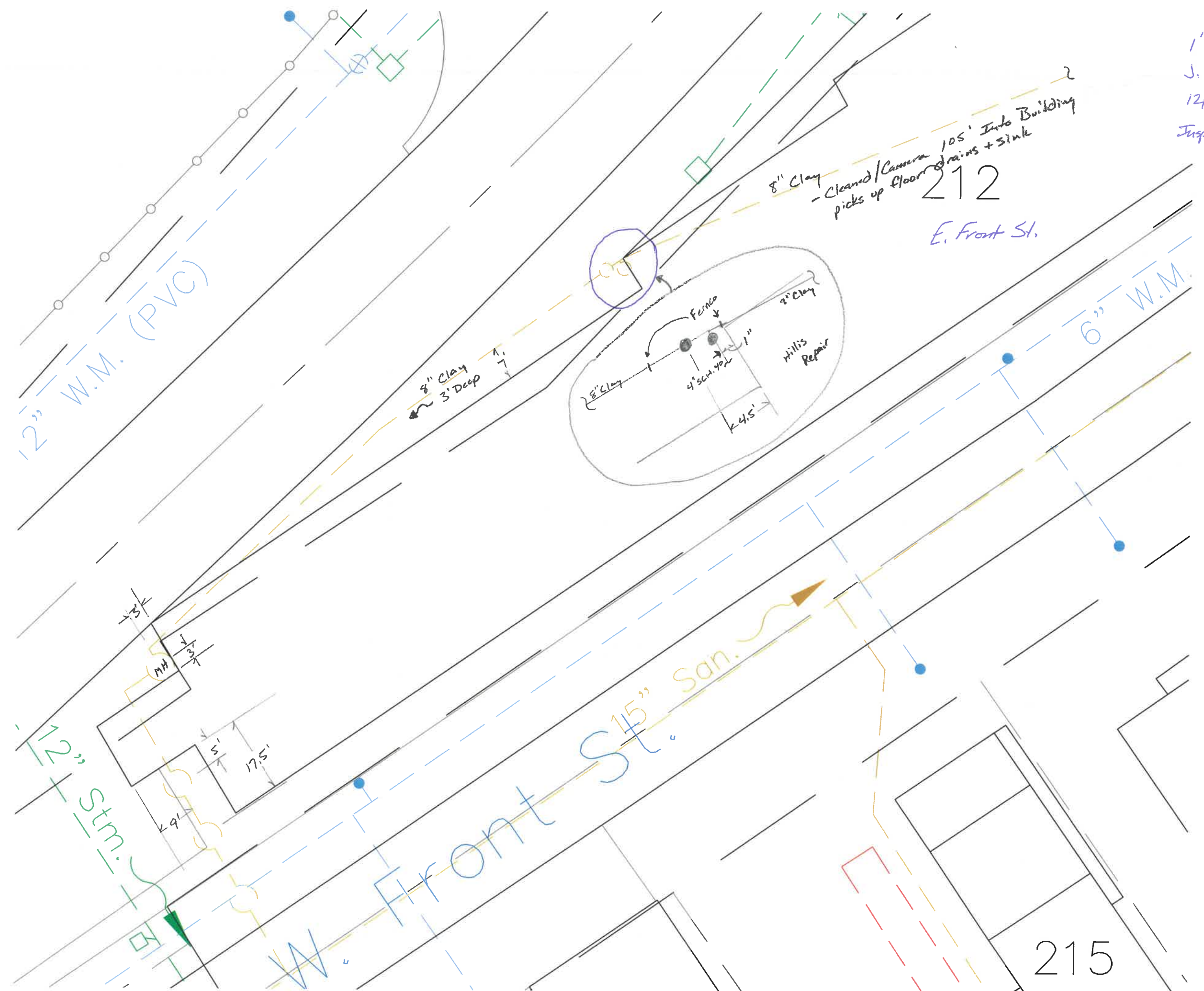


1" = 20'  
J. Hillis  
12/13/22  
Insp. By: A. Debl

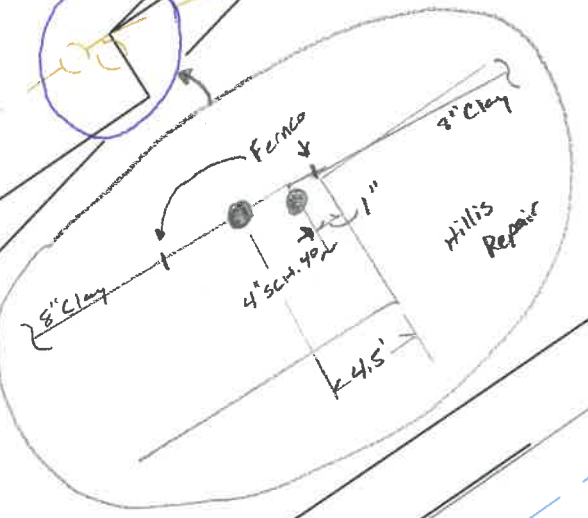


212

E. Front St.

12" W.M. (PVC)

8" Clay  
3' Deep



8" Clay

Cleaned/Camera 105' Into Building  
picks up floor drains + sink

12" Stm.

W. Front St. 15" San.

215

6" W.M.